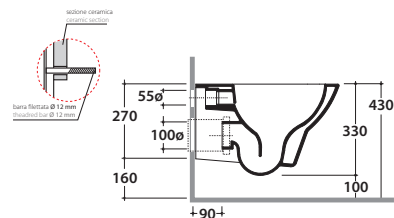
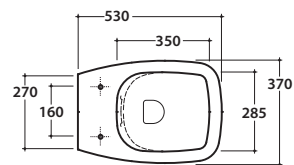


DAILY VASO SOSPESO SENZABRIDA® DAS03BI

CE EN 997:2015

GLOBO



Effetto antibatterico su ceramica BATAFORM®
Ceramic antibacterial effect BATAFORM®



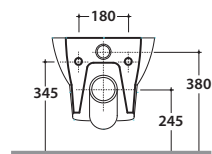
Scarico ottimizzato a 4/2,6 litri
Drain 4/2,6 lt



Prodotto smaltato con CERASLIDE®
Glazed product with CERASLIDE®

Cod. **DAS03BI**

Vaso sospeso SENZABRIDA® 53.37 h33 cm. Scarico 4 / 2,6 Lt. Completo di fissaggi. Peso 21 Kg
Wall-hung Wc 53.37 h33 cm No Rim. Drain 4/2,6 Lt. Fixing kit included. Weight 21 Kg



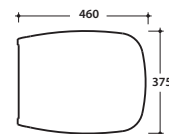
Copriwater con sistema di cerniere a sgancio rapido
Seat-cover with hinge system to quick release



Trattamento antibatterico per sedili in versione bianco lucido
Antibacterial treatment on toilet seats in shiny white

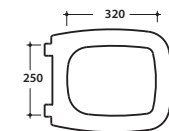
Cod. **DAR19BI**

Coprivaso rimovibile in duroplast con chiusura tradizionale. Peso 3 Kg
Removable duroplast seat-cover with traditional closing system. Weight 3 Kg



Cod. **DAR20BI**

Coprivaso rimovibile in duroplast con chiusura rallentata. Peso 3 Kg
Removable duroplast seat-cover with soft-closing system. Weight 3 Kg



Cod. **VA132**

Riduttore flusso di scarico.
Flow reductor.



Cod. **PU001**

Protezione antiurto e acustica.
Acoustic and crash protection.



Cod. **FI002**

Staffa di fissaggio a "L". Peso 2,5 Kg
Fixing brackets for W/H sanitary. Weight 2,5 Kg

water label		
Average flushing volume (litres)		
Max. 3.5		3,38
Max. 4.5		
Max. 5.5		
Max. 6		
> 6		

www.europeanwaterlabel.eu